



Delivering Concrete Solutions

DATA SHEET

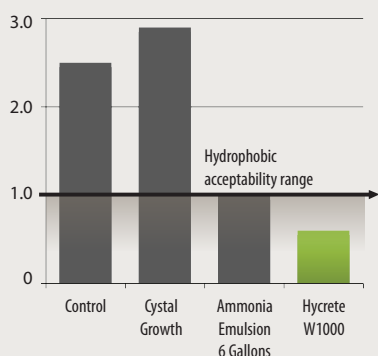
Hycrete W1000

For technical assistance contact your local Hycrete Representative or call (201) 386-8110

For Maximum Waterproofing Protection in Concrete



Water Absorption (%) under BSI 1881-122



KEY BENEFITS

- Maximum waterproofing protection in concrete: less than 1% water absorption
- Corrosion protection; protective coating formed around steel reinforcement
- Neutral concrete set time performance, even in high fly ash and GGBS (slag) mixes
- Resists hydrostatic pressure
- Can heal cracks up to 0.4mm
- Consistent performance and verifiable dosage
- Easy to use; no additional labor required
- Safe to use

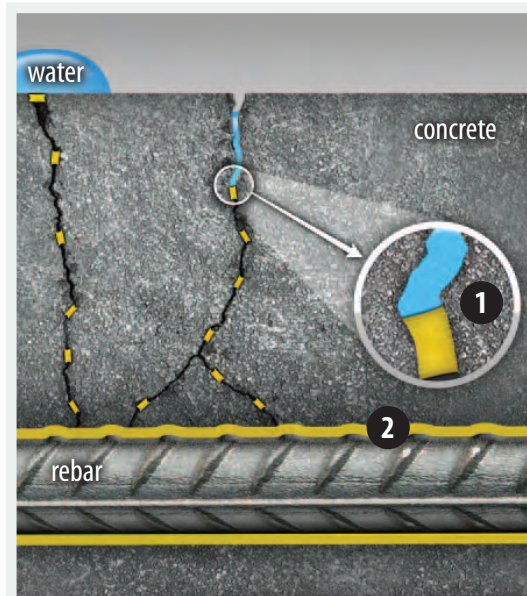
PRODUCT DESCRIPTION

Hycrete W1000, Hycrete’s flagship concrete waterproofing admixture, dramatically reduces water ingress through concrete. Ordinary concrete absorbs water and dissolved salts through its network of pores, leading to water infiltration and corrosion of steel reinforcement. Hycrete W1000 reduces absorption to 1% or lower and forms a protective coating around steel reinforcement. Less water and fewer chlorides are able to penetrate the concrete and the reinforcement has enhanced protection from corrosion.

Hycrete W1000 delivers consistent and reliable performance and is easy to use. Hycrete W1000 is an environmentally-responsible, Cradle to Cradle™ certified product. Using Hycrete W1000 allows owners and builders to have the comfort of knowing their investment/project remains secure against one of nature’s most damaging elements ...water.

PRODUCT FEATURES

- Cradle to Cradle™ certified by MBDC
- NSF/ANSI 61 - approved for use in potable water tanks greater than 200,000 gallons
- Compatible with standard admixture metering equipment
- ISO 14021 compliant - recycled content in accordance with Type II environmental labeling; applicable for LEED Materials and Resources Credit 4.1/4.2 - Recycled Content



1. Hydrophobic pore blocking
2. Corrosion-inhibiting surface coating

USES AND APPLICATIONS

- Included in Hycrete System W; see separate data sheet for Hycrete System W
- Extra protection for walls and slabs
- Above and below grade construction
- Water containment reservoirs
- Sewage and water treatment plants
- Secondary containment structures
- Underground vaults
- Tilt-up panel walls
- Pre-cast components
- Architectural water features and fountains
- Bridges, dams and highway infrastructure
- Aquatic centers, marinas, and zoos
- Swimming pools

PRODUCT PERFORMANCE*

Water absorption	BSI 1881-122	Less than 1% absorption
Permeability/hydrostatic pressure	DIN 1048	Passes DIN 1048
Crack healing	ASTM C597	Concrete with Hycrete fosters faster and 100% complete healing compared to untreated control
Set time	ASTM C403	Set neutral
Drying shrinkage	ASTM C157	Neutral to the control
Slump	ASTM C143	Neutral
Workability	N/A	Excellent
Effect on concrete color	N/A	None
Compressive strength	ASTM C139	Water/cement ratios may need to be lowered to account for possible, minor strength decreases associated with some materials. Perform trial mixes.
Potable water	NSF/ANSI 61	Approved for use in potable water tanks greater than 200,000 gallons

*All benefits and results are based on actual test results. Results may vary according to concrete mix designs, Hycrete W1000 dosage, or other factors.

GENERAL PROPERTIES AND CHARACTERISTICS

<p>Physical characteristics:</p> <p>Form Liquid</p> <p>Specific gravity 1.05</p> <p>Chloride content Nil</p> <p>pH: 8.5</p>	<p>Compatibility:</p> <ul style="list-style-type: none"> ■ Most concrete admixtures ■ Most Portland cements or replacements including fly ash and GGBS (slag) ■ Shotcrete mixes and application ■ Most surface-applied sealants and external membrane protection systems
<p>Recommended dosage: 1.0 U.S. gallon per cubic yard of concrete (5.0 liters per cubic meter)</p>	
<p>Packaging: 1 gallon bottles; 5 gallon pails; 55 gallon drums; 275 gallon totes; bulk tanker delivery</p>	
<p>Storage and handling: Store above 32°F (0°C) and below 120 °F (48 °C). Slight flocculation can occur over time due to pH reductions. Such flocculation does not affect product performance</p>	

NOTES

- Concrete mixes may need to be adjusted to meet compressive strength requirements. User should perform trial mixes prior to placement and make necessary adjustments to the mix design as needed.
- For air-entrained mixes or if considering dosages other than recommended dosage contact Technical Services before use.

SAFETY

Hycrete W1000 is a water-based material and should not be swallowed or come into contact with skin or eyes. Wear suitable protective gloves and goggles. If material comes in contact with the skin, wash immediately with soap and water. In case of contact with eyes, rinse immediately with sufficient water and seek medical support. If swallowed, seek immediate medical attention. For further information please consult the Material Safety Data Sheet.

RELATED DOCUMENTS

- Hycrete Mixing Instructions
- Hycrete Material Safety Data Sheet – Hycrete W1000